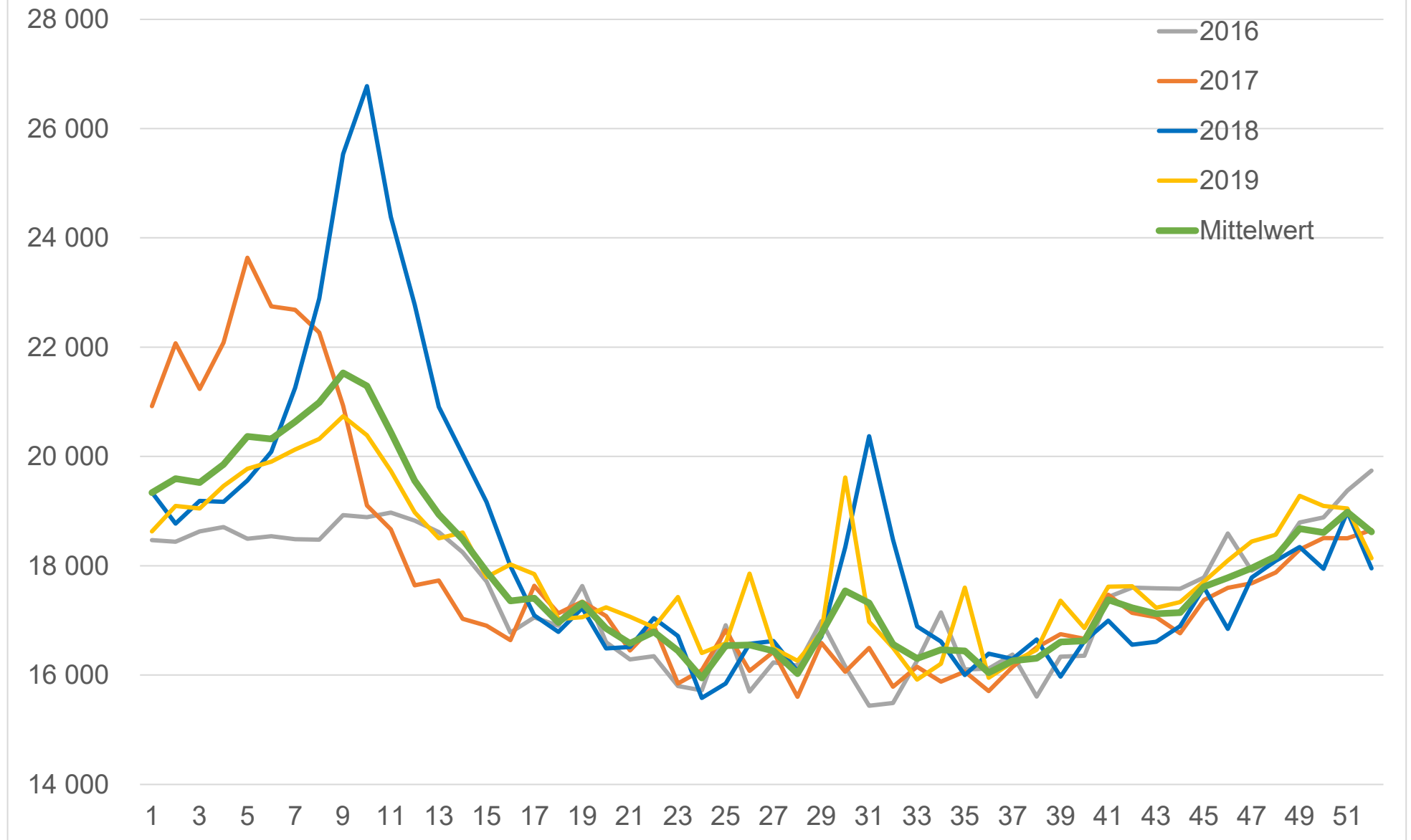


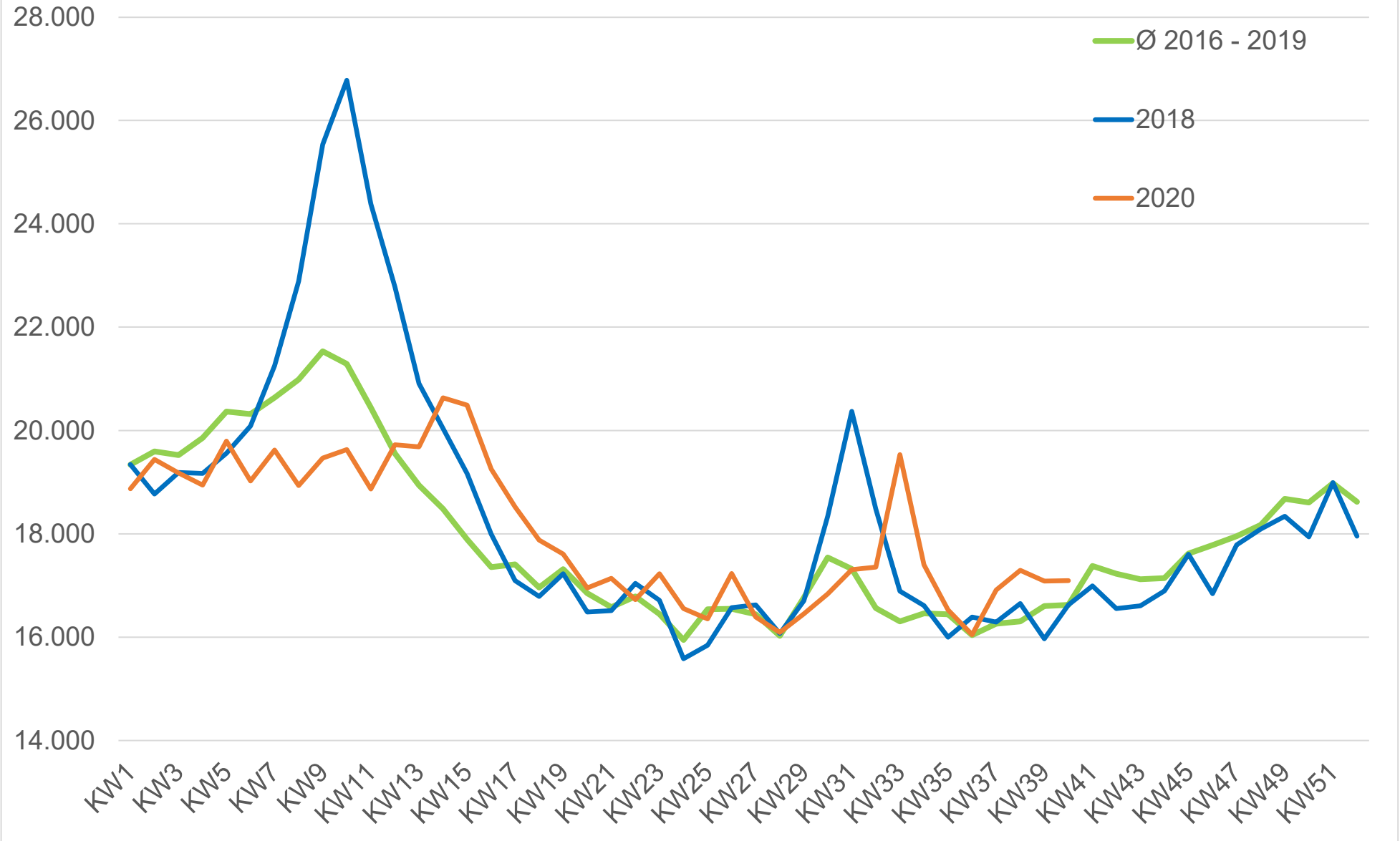
Sterbezahlen 2016 - 2019



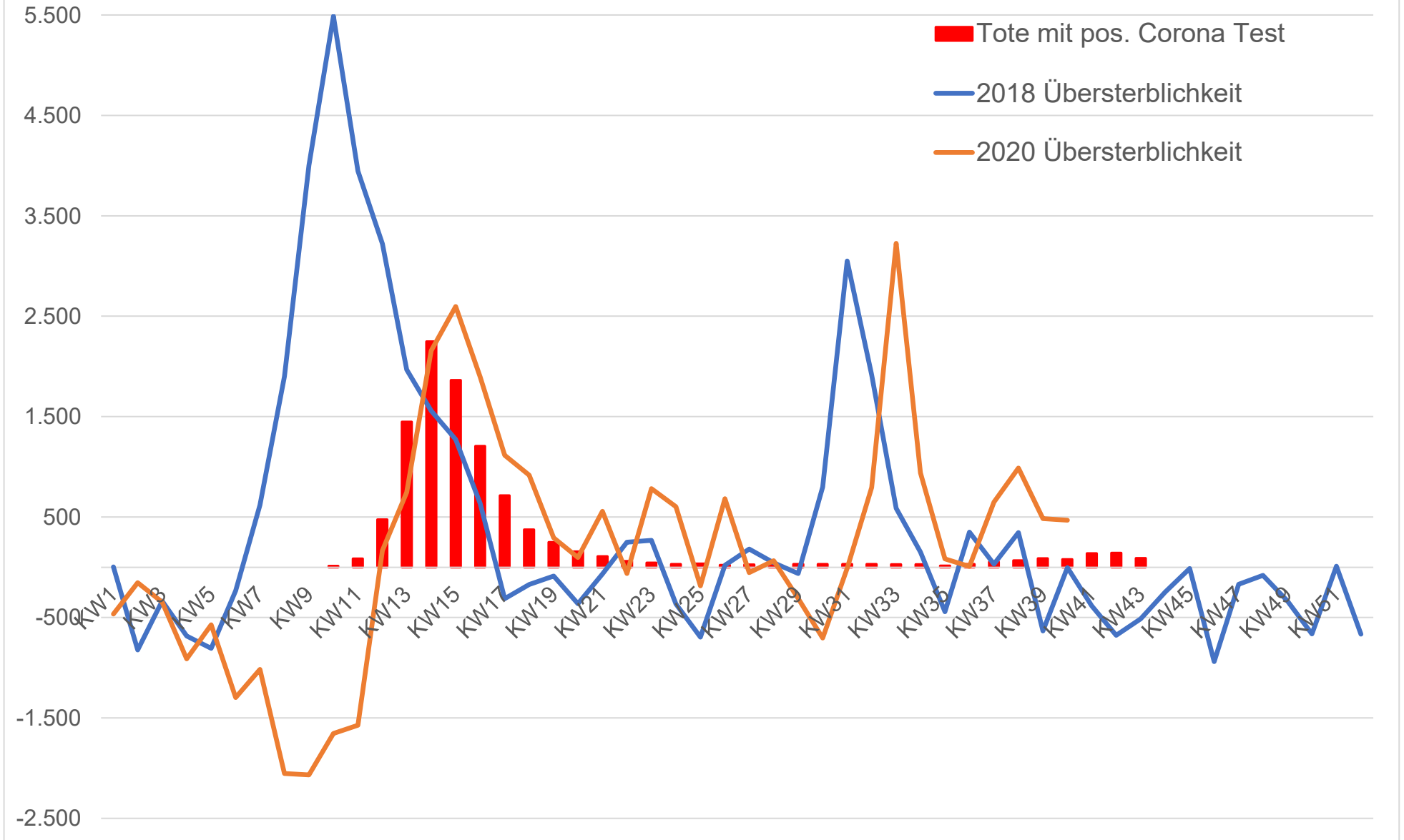
30.10.2020

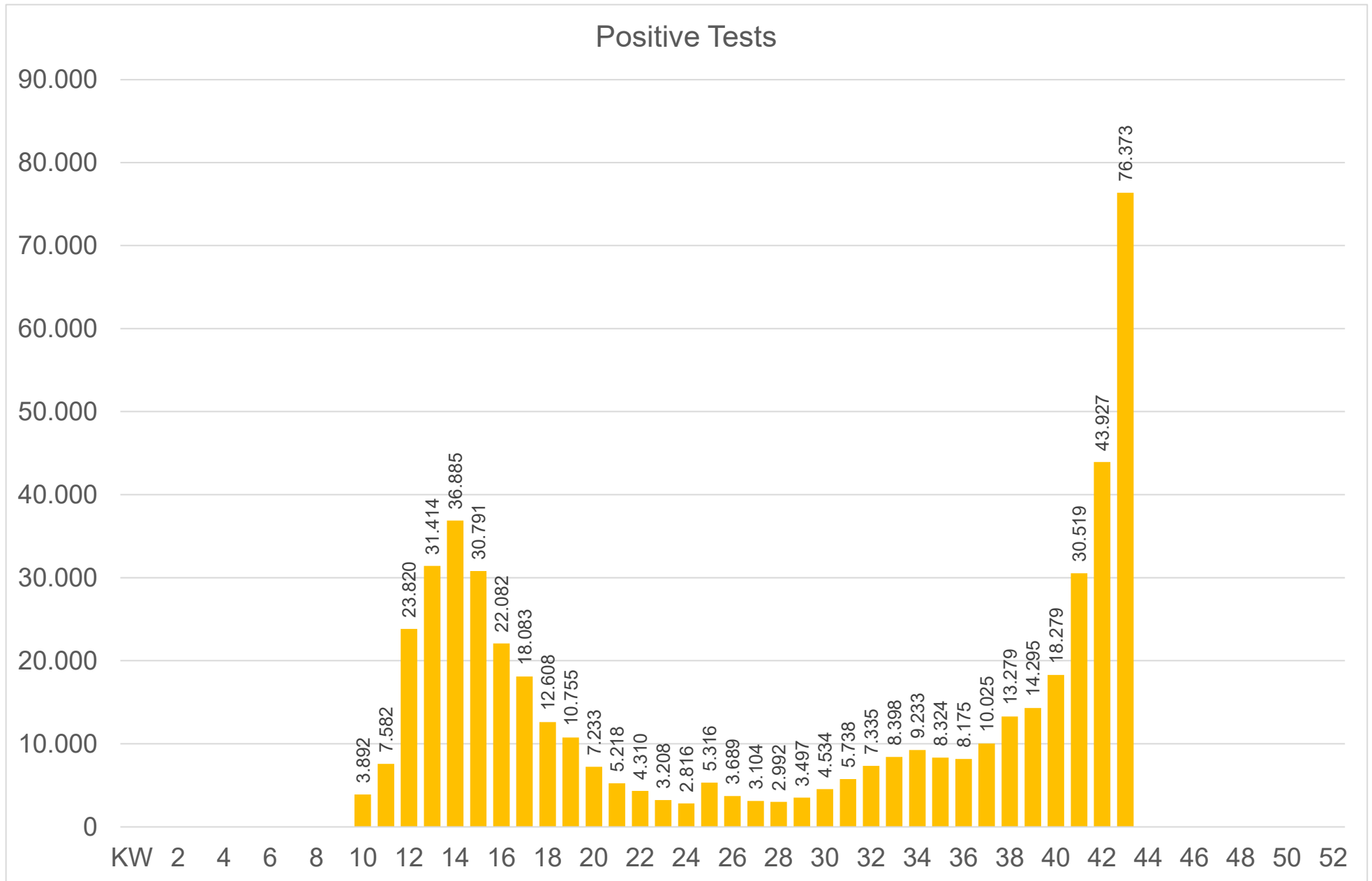
Quellen: RKI Tagesberichte und Wochenberichte sowie stat. Bundesamt

Sterbebezahlen je Woche



Corona und Übersterblichkeit

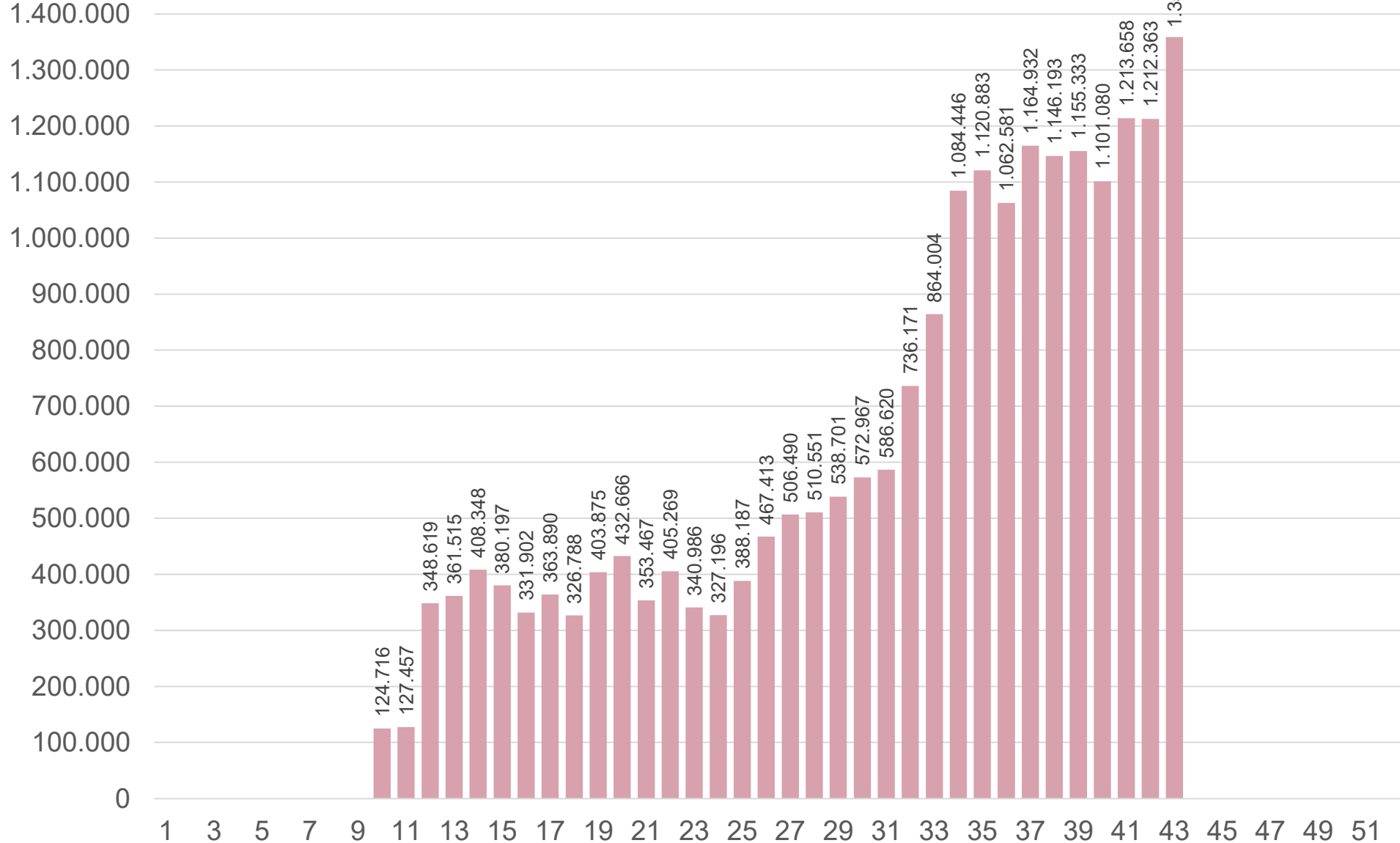


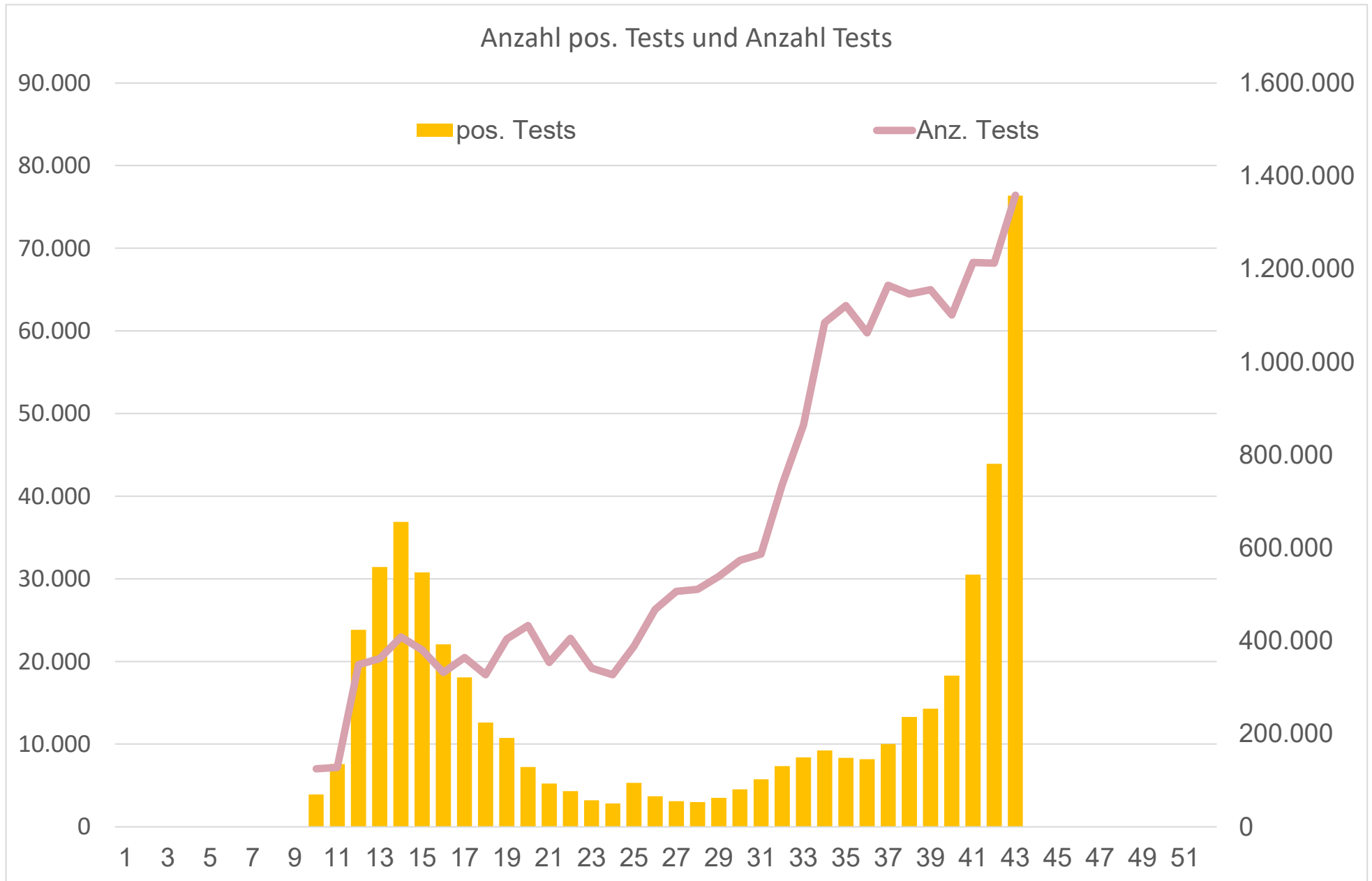


30.10.2020

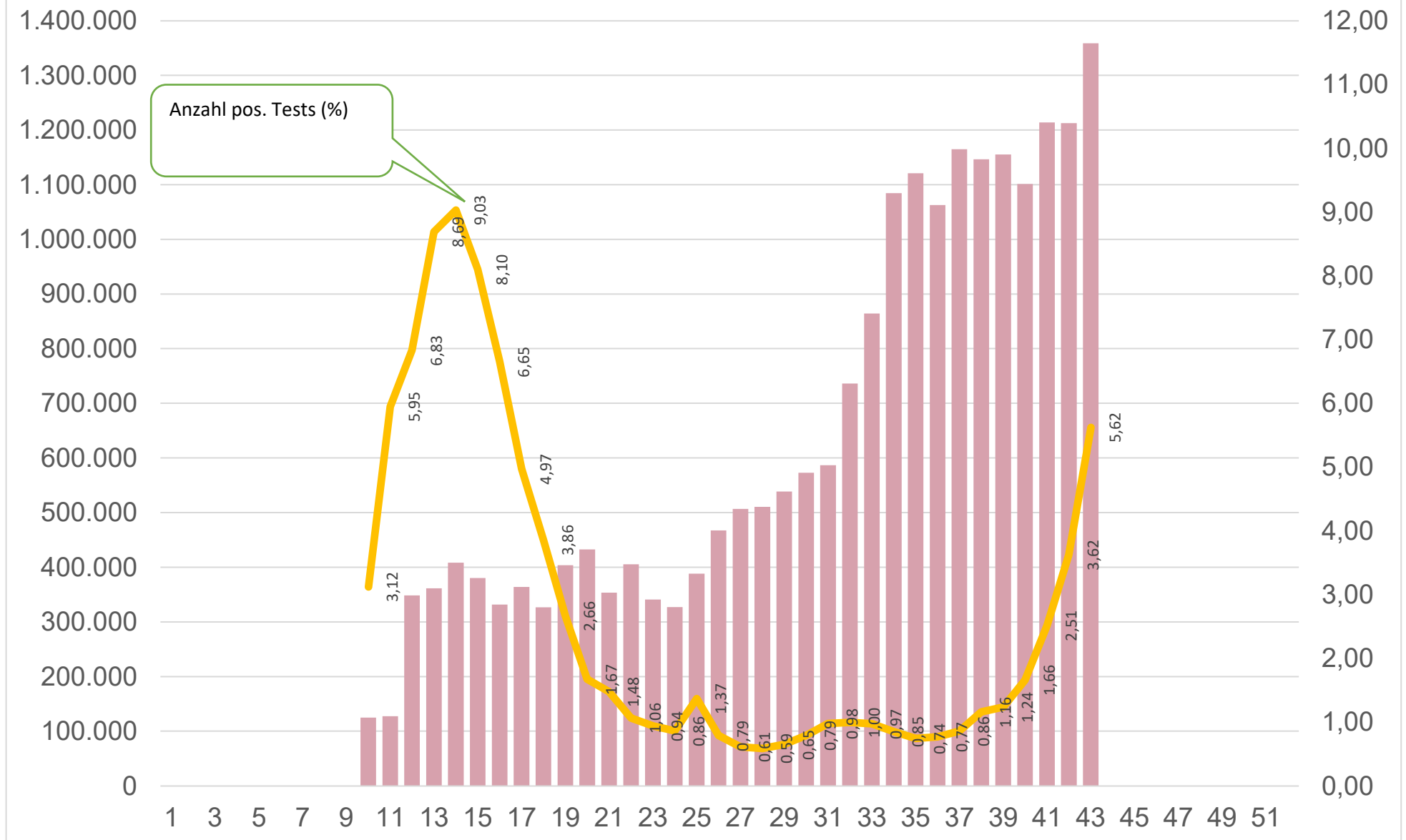
Quellen: RKI Tagesberichte und Wochenberichte sowie stat. Bundesamt

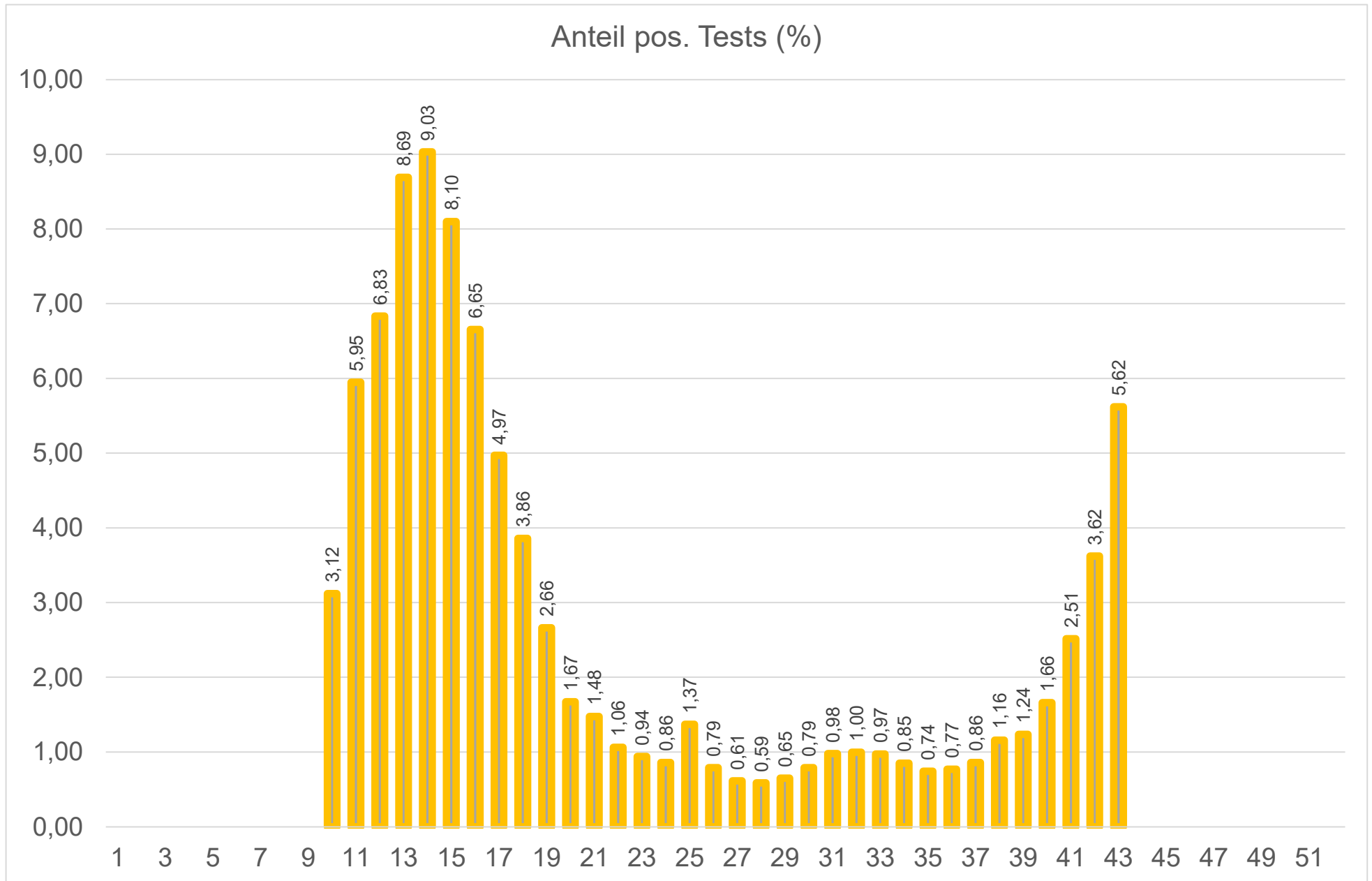
Anzahl Tests



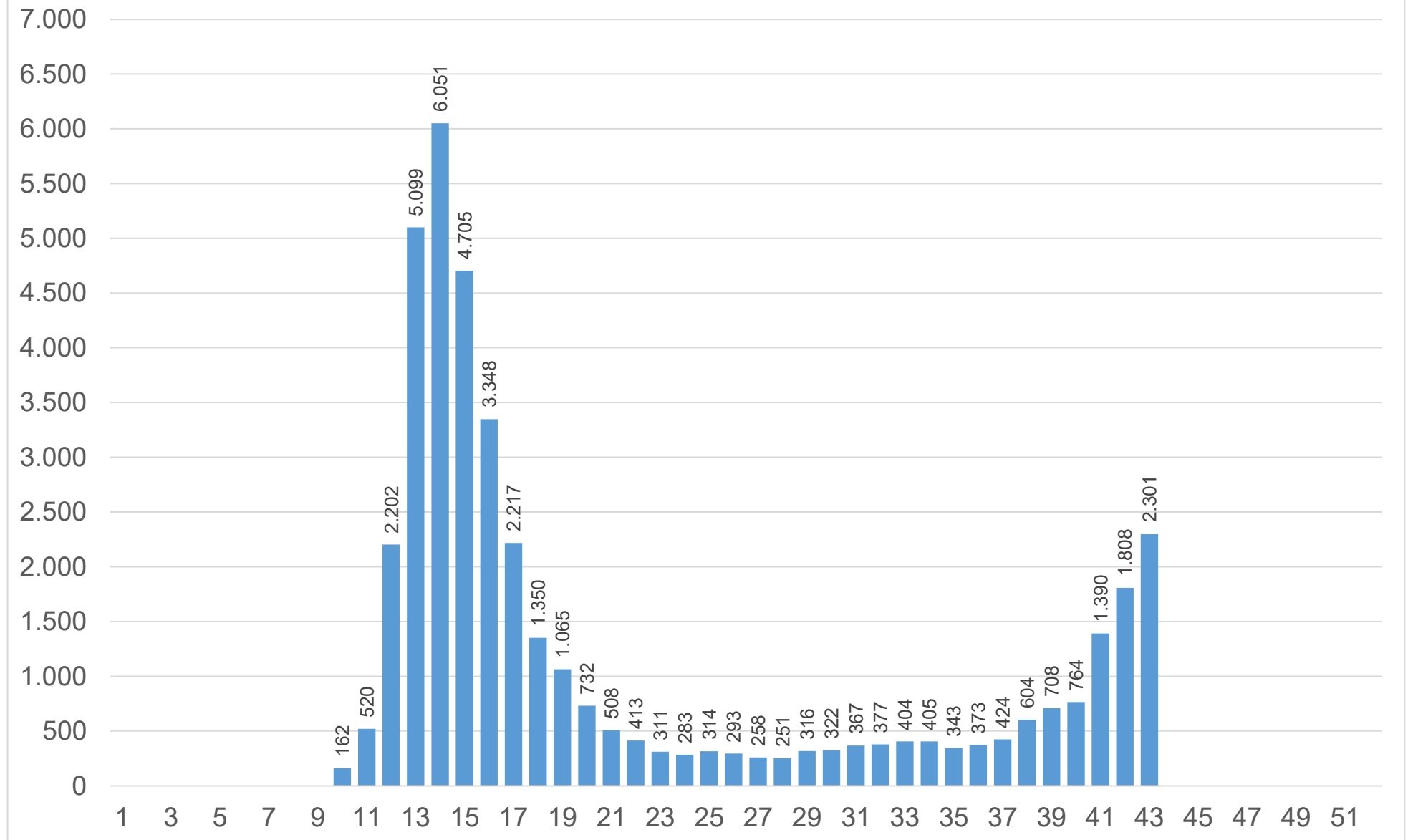


Anzahl Tests und Anteil pos. Tests (%)





Hospitalisierung

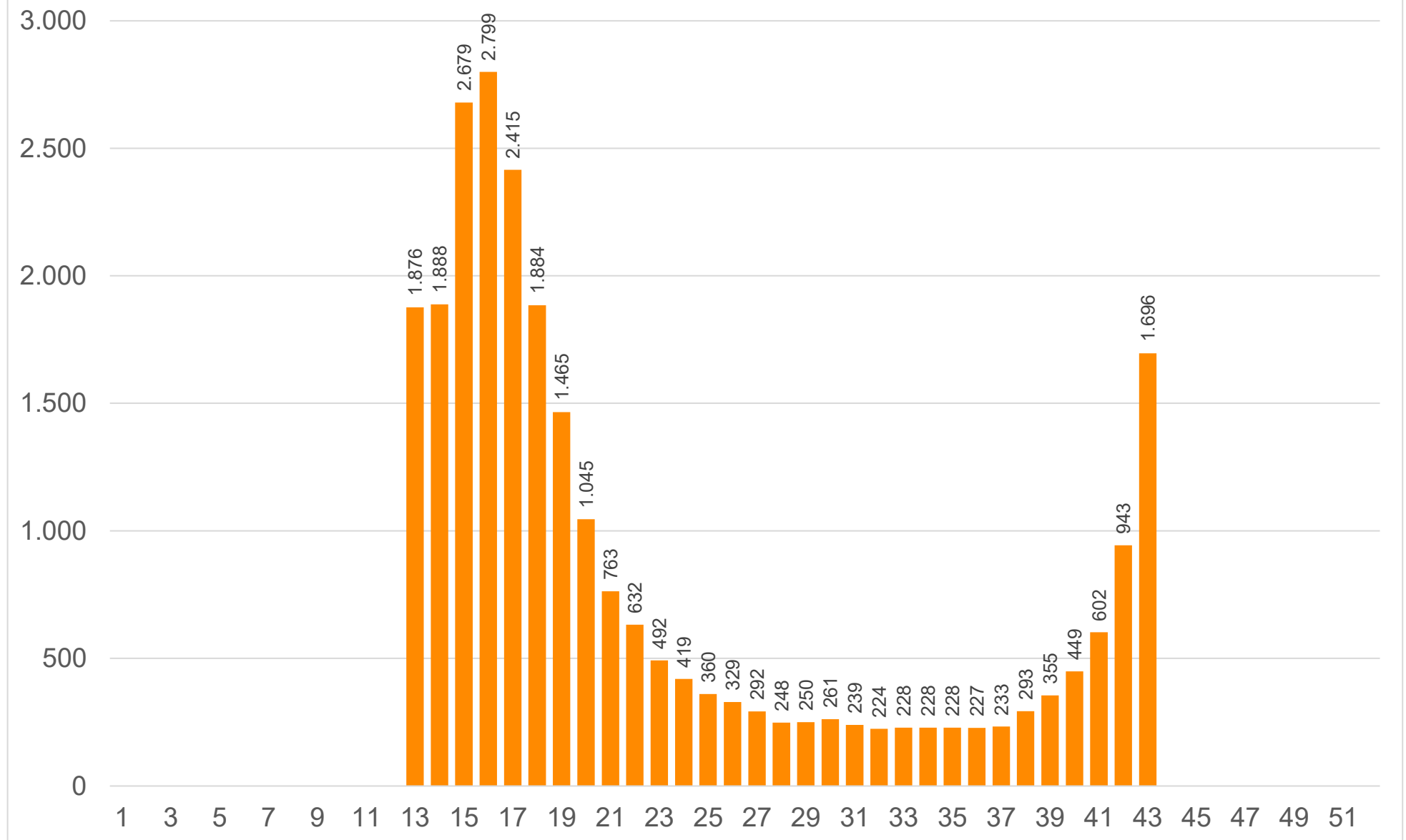


30.10.2020

Quellen: RKI Tagesberichte und Wochenberichte sowie stat. Bundesamt

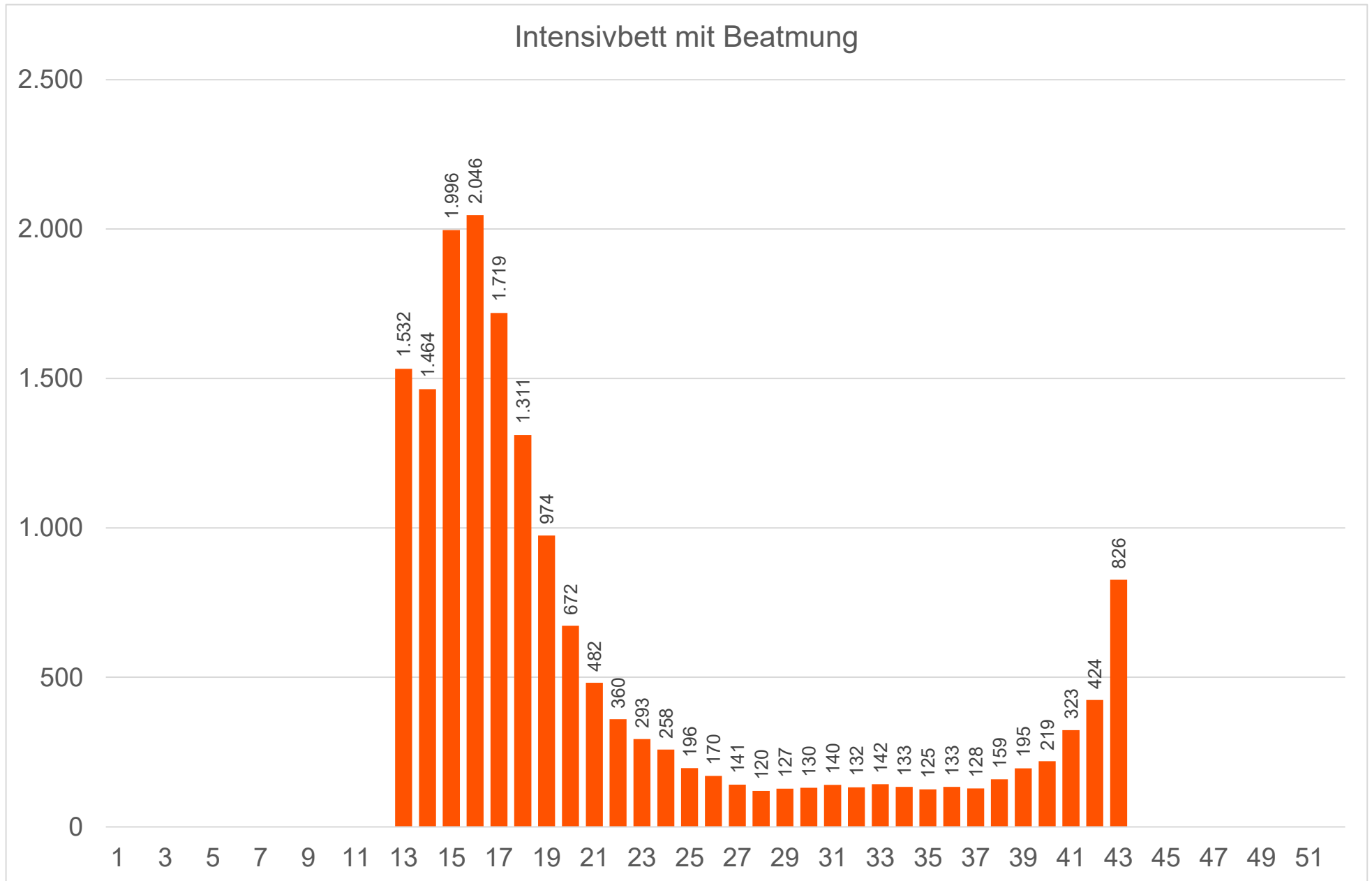
www.diebasis-bw.de / Seite 9

Hospitalisierung mit Intensivbett (mit und ohne Beatmung)



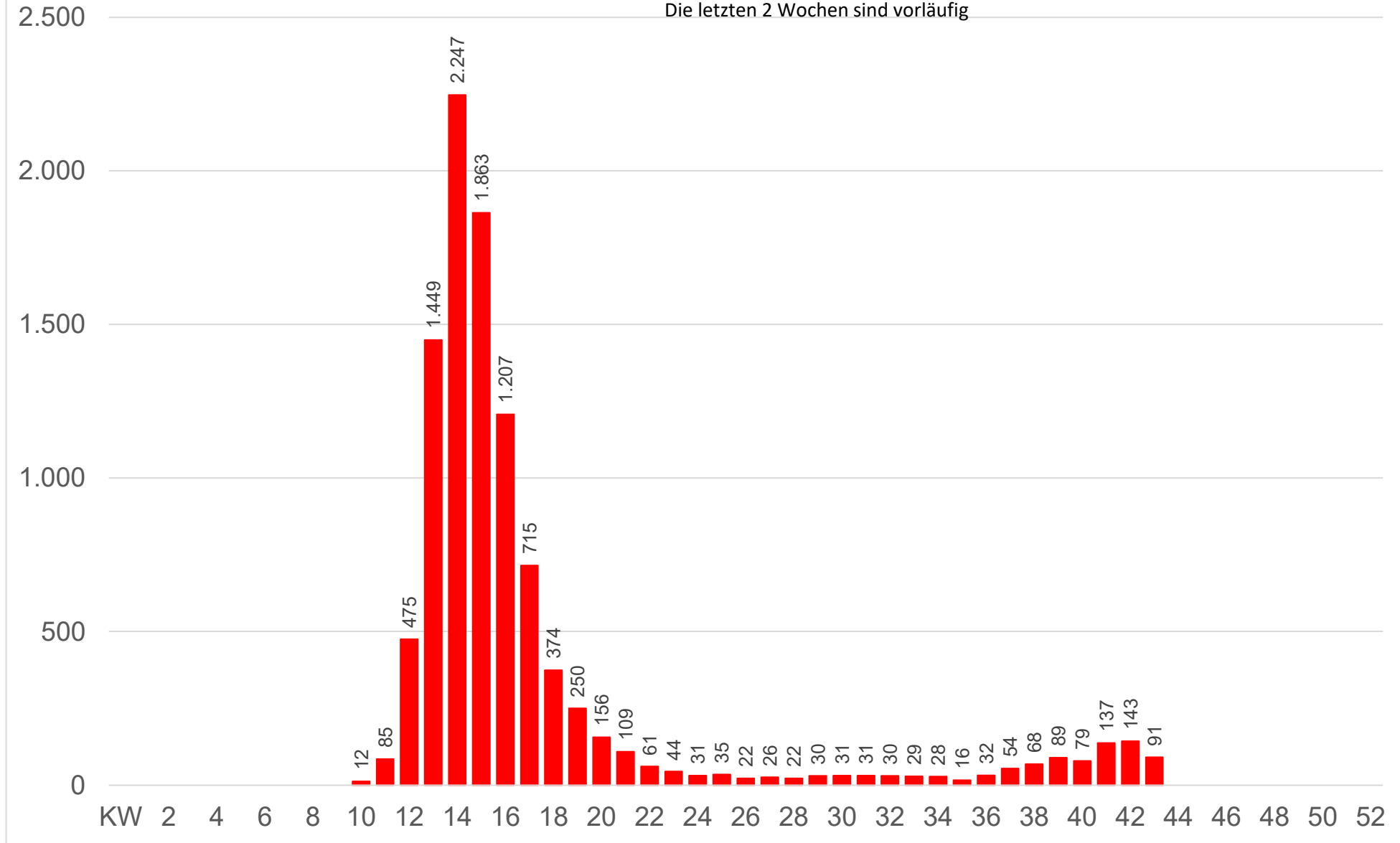
30.10.2020

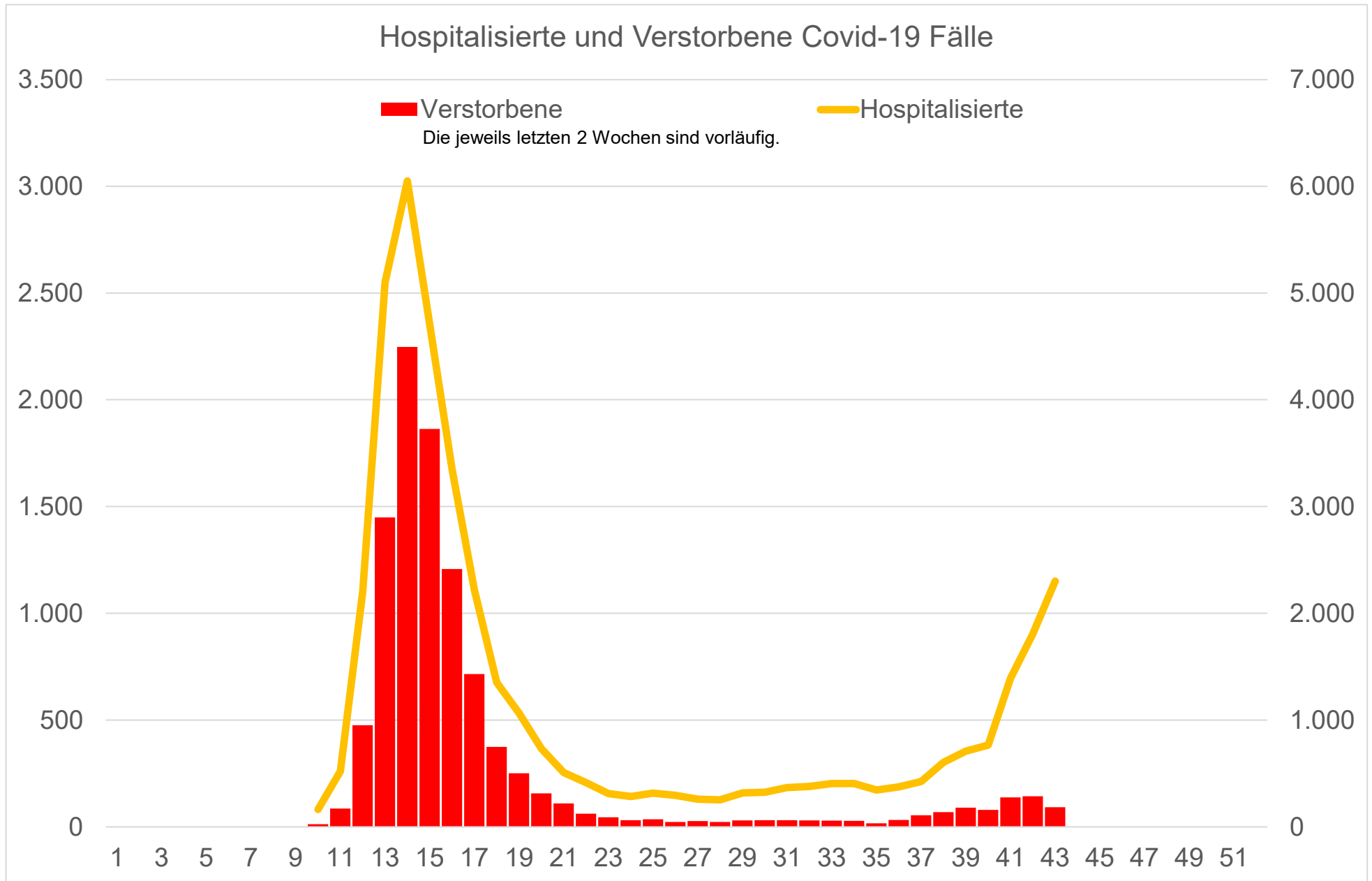
Quellen: RKI Tagesberichte und Wochenberichte sowie stat. Bundesamt

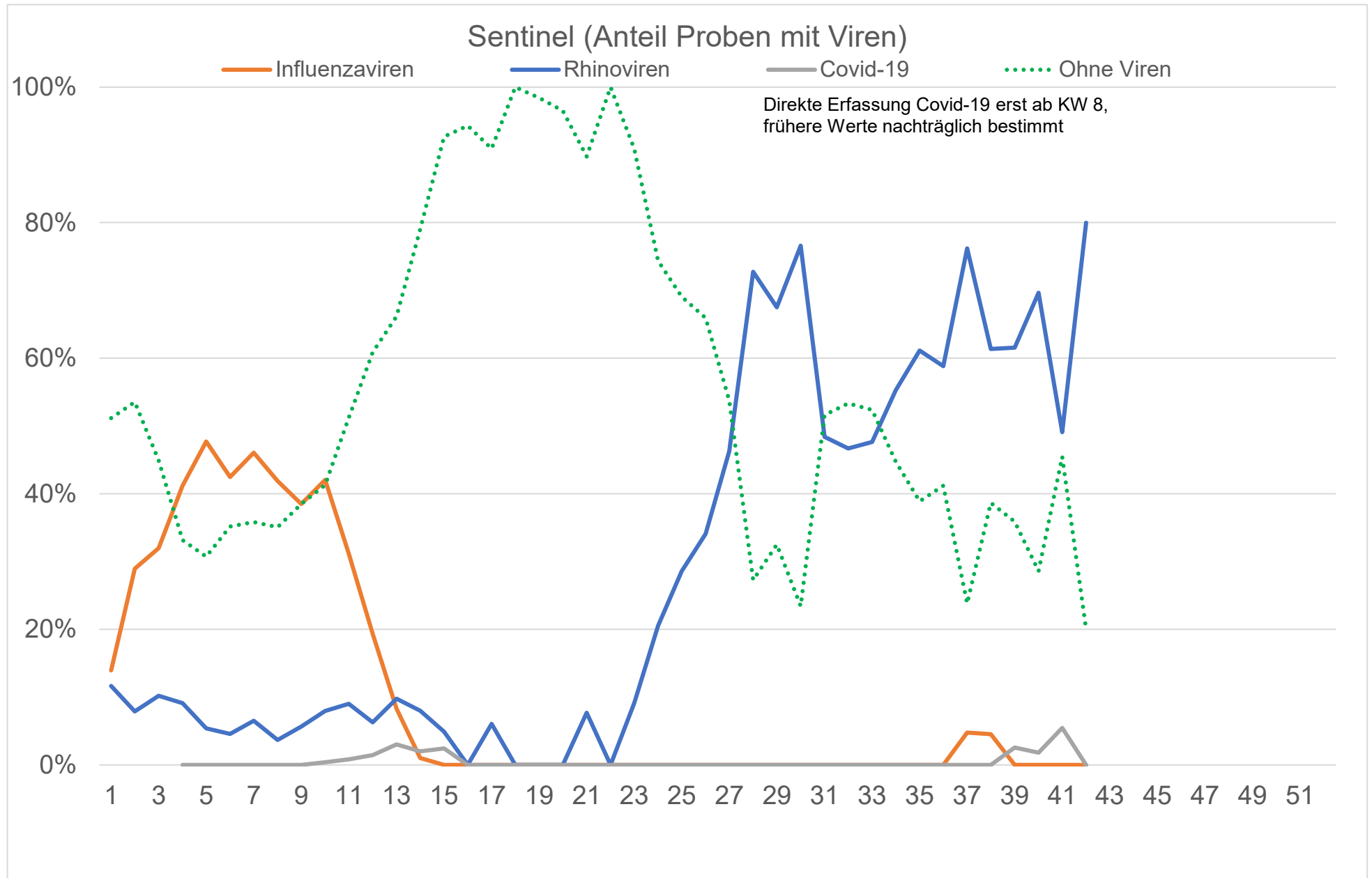


Verstorbene mit positivem Corona Test

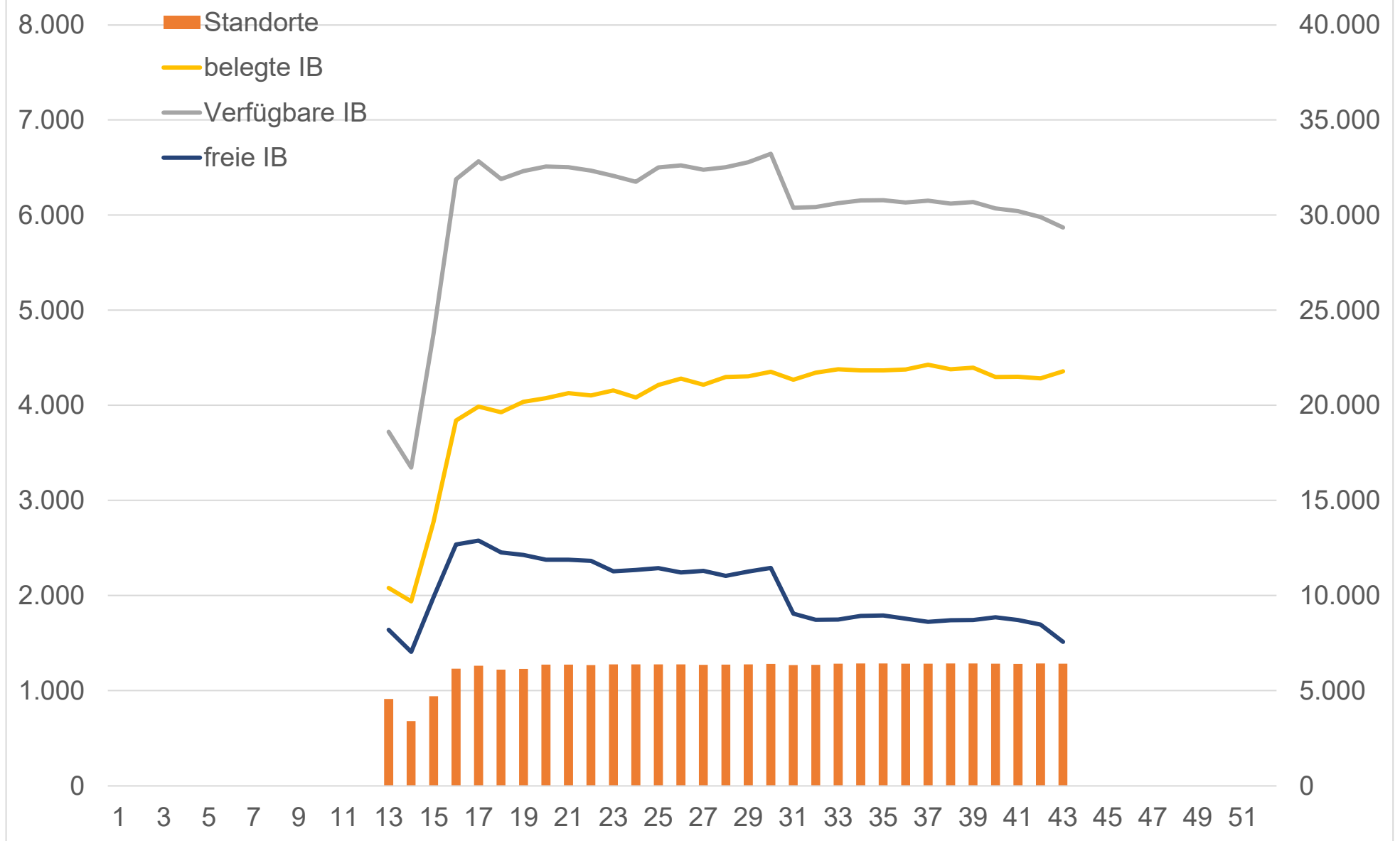
Die letzten 2 Wochen sind vorläufig

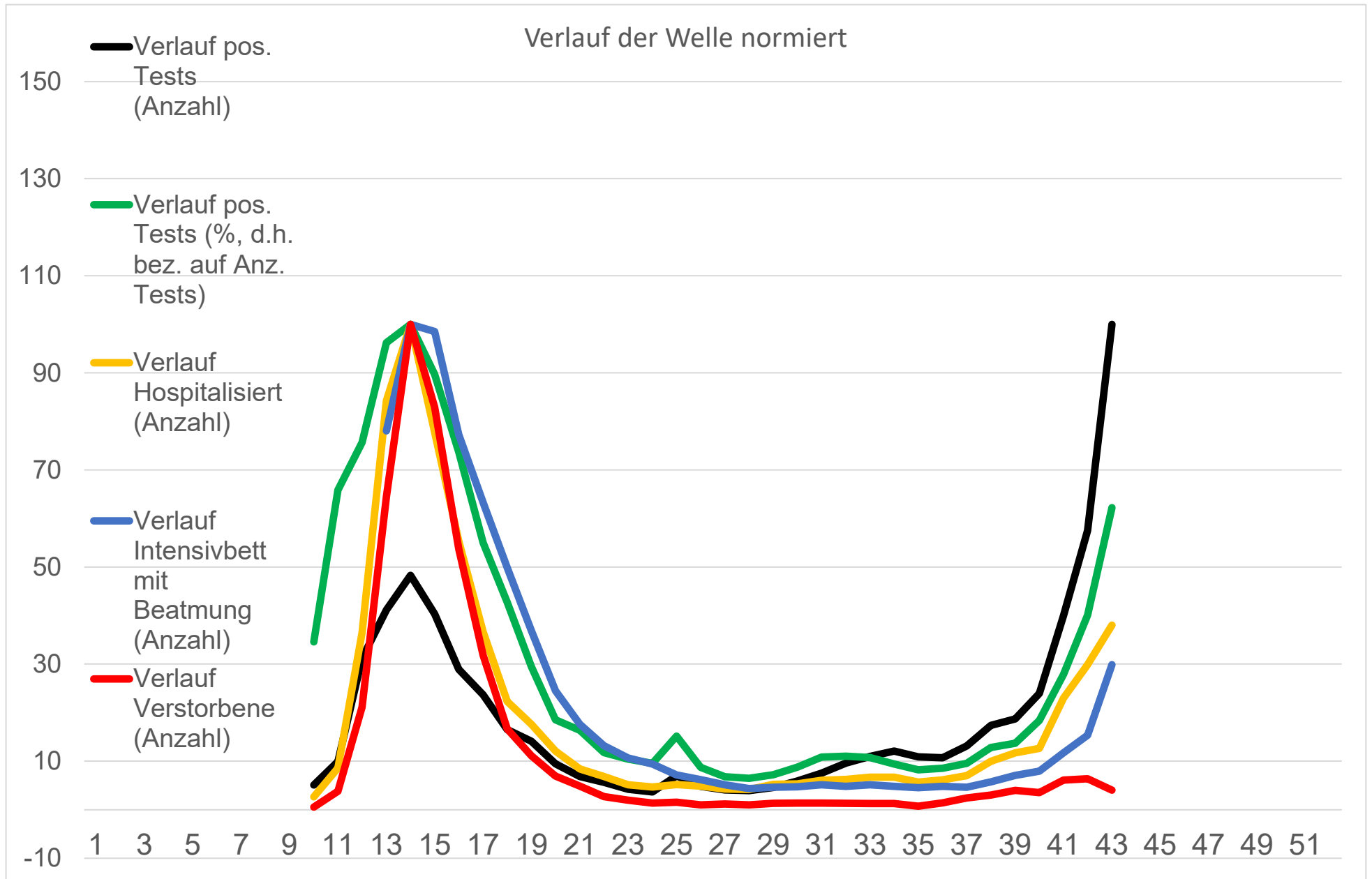






Intensivbettenregister





	497.729		442.704
		-> Faktor	1,12
KW	Anzahl positive Testungen je Woche	kummuliert	Anzahl Covid-19 Fälle je Woche
1			
2			
3			
4			
5			
6			
7			
8			
9			
10	3.892	3.892	892
11	7.582	11.474	6.428
12	23.820	35.294	22.438
13	31.414	66.708	34.027
14	36.885	103.593	36.090
15	30.791	134.384	27.176
16	22.082	156.466	17.338
17	18.083	174.549	12.366
18	12.608	187.157	7.442
19	10.755	197.912	6.222
20	7.233	205.145	4.722
21	5.218	210.363	3.612
22	4.310	214.673	3.198
23	3.208	217.881	2.352
24	2.816	220.697	2.339
25	5.316	226.013	4.089
26	3.689	229.702	3.197
27	3.104	232.806	2.693
28	2.992	235.798	2.415
29	3.497	239.295	3.017
30	4.534	243.829	3.929
31	5.738	249.567	4.814
32	7.335	256.902	6.037
33	8.398	265.300	7.932
34	9.233	274.533	9.576
35	8.324	282.857	8.803
36	8.175	291.032	8.592
37	10.025	301.057	9.749
38	13.279	314.336	12.240
39	14.295	328.631	13.021
40	18.279	346.910	15.812
41	30.519	377.429	26.048